

The logo for Strategic Process Management (SPM) features the letters 'S', 'P', and 'M' in a large, bold, dark blue font. Each letter is overlaid with a horizontal arrow pointing to the right. The 'S' and 'M' are overlaid with a light blue arrow, while the 'P' is overlaid with a grey arrow. Below the letters, the full name 'STRATEGIC PROCESS MANAGEMENT' is written in a smaller, dark blue, all-caps font.

SPM

STRATEGIC PROCESS MANAGEMENT

Stewardship Next Level

The Stewardship Architecture

Part 3 of a 3 Part Discussion

Day of Discovery # 38

Visit: www.StrategicProcessManagement.com/Contact
to request your complimentary strategic planning guide.

Stewardship Is Assumed. Very Few Can Prove It.

The blueprint for transforming institutional intent into a measurable, governed, and compounding competitive advantage.



The Hidden Strategic Paradox: Relationships Outpace Asset Capture

Credit unions possess unprecedented relationship scale but capture only a fraction of the corresponding financial activity.



When positioning relies heavily on financial comparisons (rates, fees, features), the cooperative model becomes invisible. Credit unions win the relationship but lose the asset consolidation.

Competing on Rate and Convenience Sterilizes Institutional Identity

The Numbers Game (The Wrong Arena)

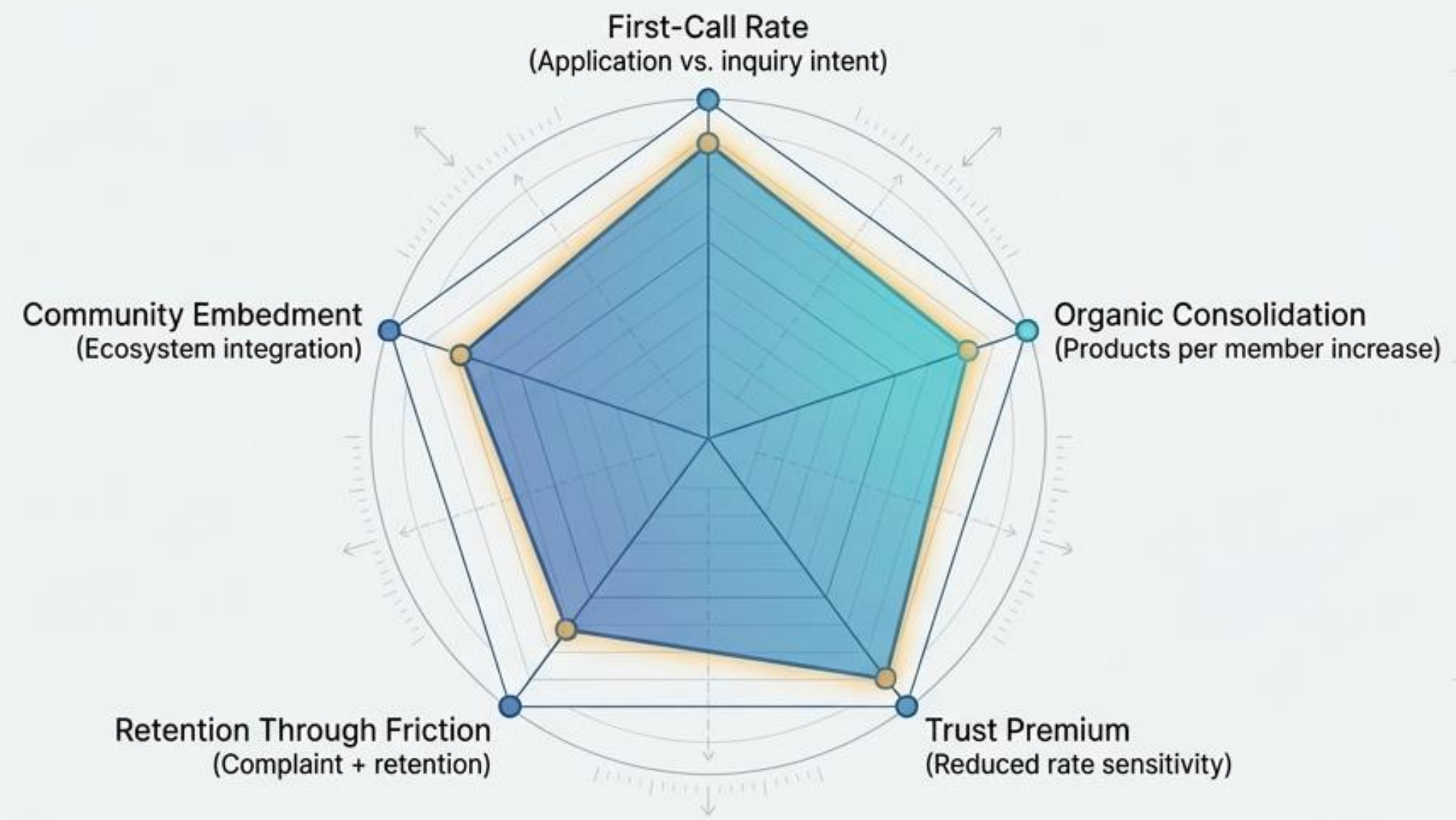
- **Competitors:** Banks, Fintechs, Digital Lenders.
- **Weapons:** Rates, Fees, Features, Speed.
- **Market Dynamic:** Sterilized financial provider. Easily substituted. Highly price-sensitive.
- **Result:** Institutional character weakens; community mission fades from view.

The Stewardship Arena (The Strategic Pivot)

- **Competitors:** True Market Stewards.
- **Weapons:** Trust, Outcome Quality, Community Embedment.
- **Market Dynamic:** Embedded market position. First-call status. Insulated from rate wars.
- **Result:** Financial services support the institutional story, not define it.

True Stewardship Leaves a Behavioral Footprint

If stewardship is not recognized by the market, it isn't functioning. Recognition shows up in behavior, positioning, and dependency.



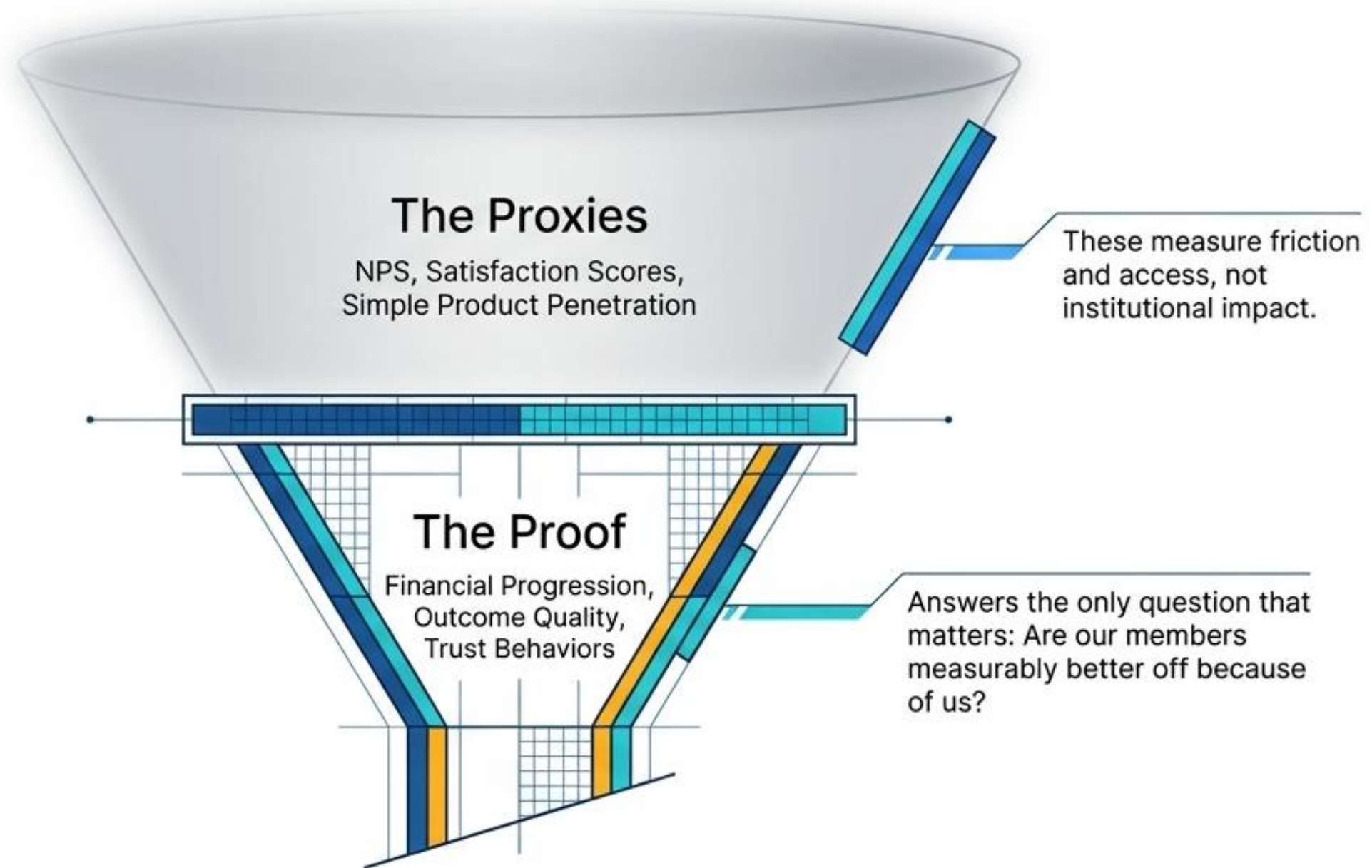
Behavior is the signal. Stewardship is felt in moments — not messages.

The Strategic Shift: From Organizational Belief to Measurable Asset



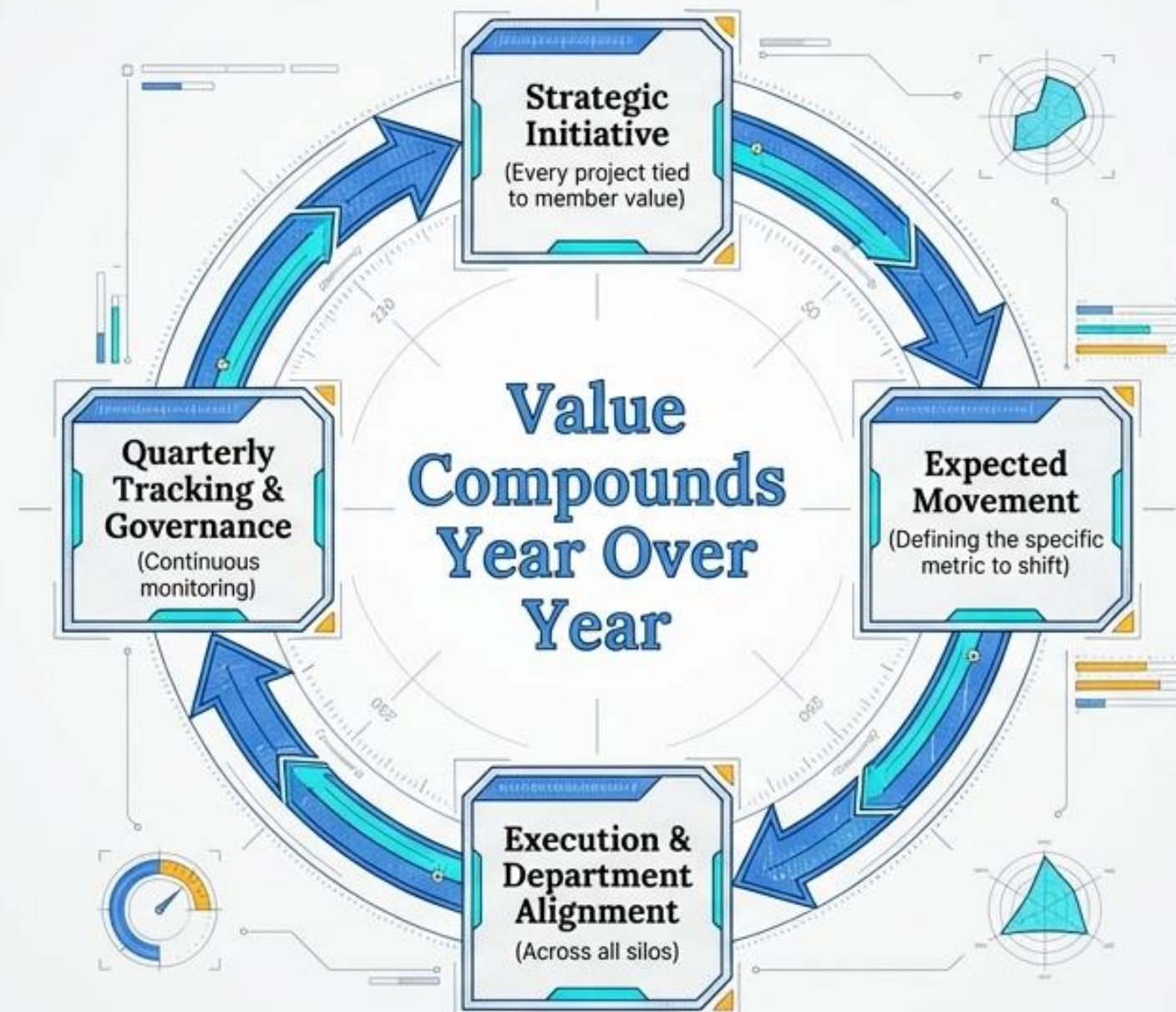
If stewardship cannot be measured and governed, it cannot become a true competitive advantage.

The Measurement Gap: Proxies Are Not Proof



Dynamic Strategic Governance (DSG) Operationalizes Stewardship

Stewardship today is occasional, inconsistent, and department-dependent. DSG transforms it into a continuously governed system.



The 5-Pillar Stewardship Index

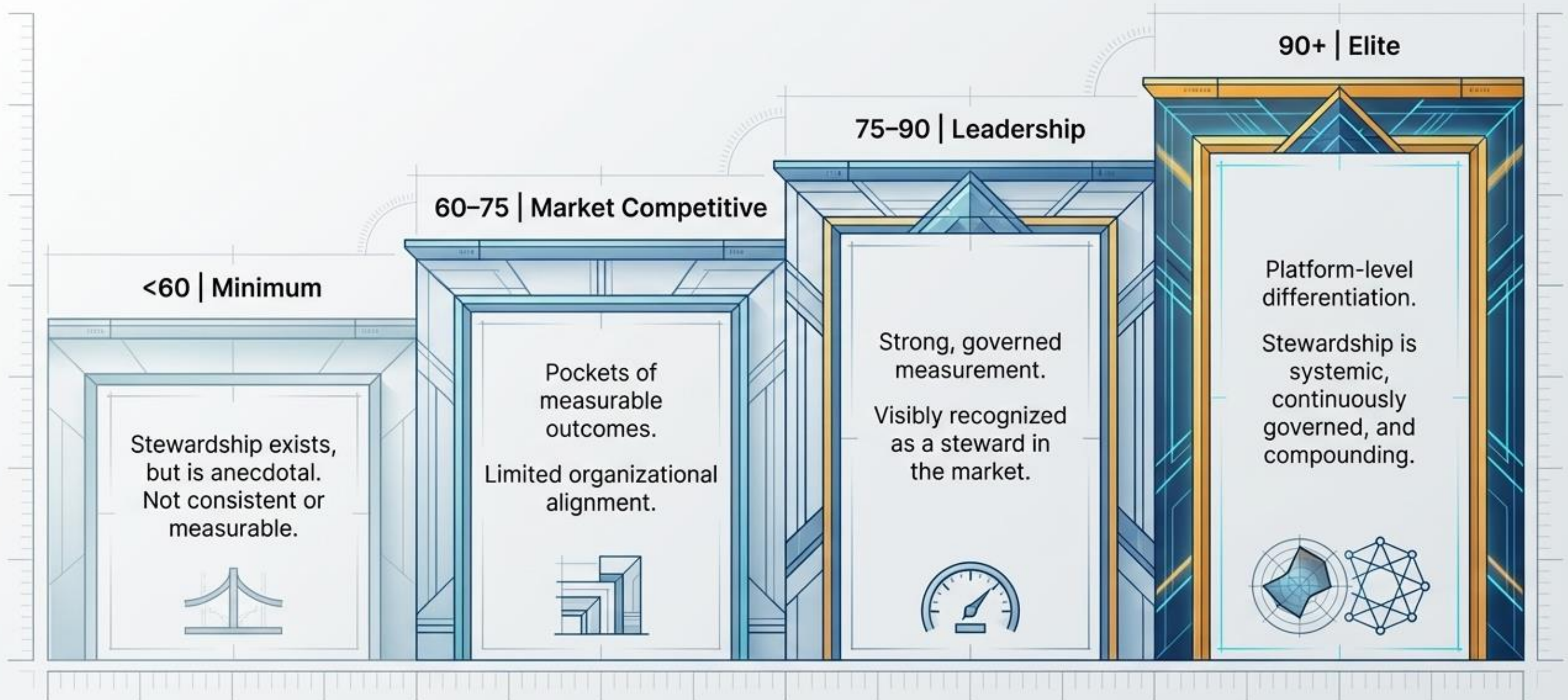
A single composite score (0–100) answering: 'To what extent are we measurably improving member outcomes and being recognized as a market steward?'



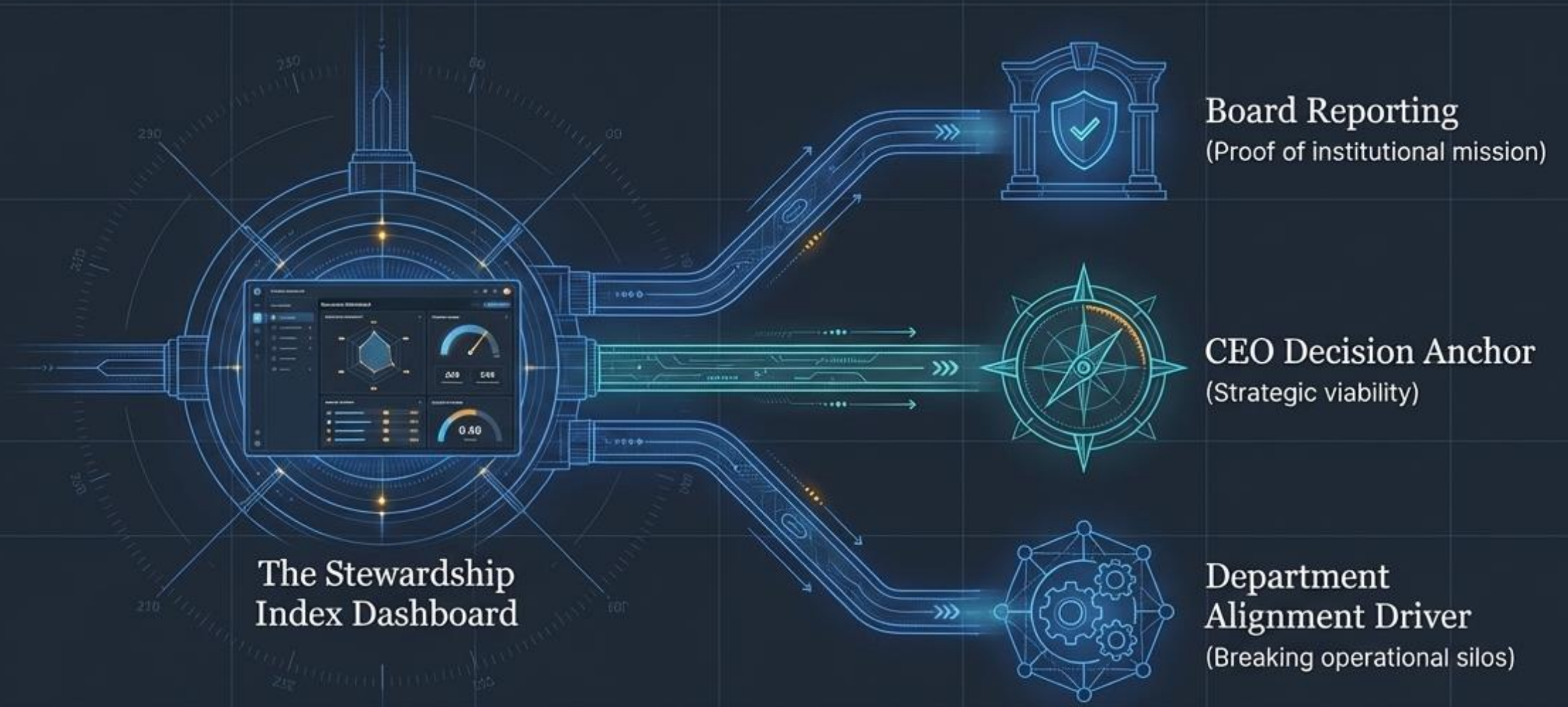
Deconstructing the Index: Measuring the Immeasurable



The Stewardship Maturity Model



The Platform Opportunity: The Engine of Enterprise Alignment



Every strategic initiative must tie to an Index metric, define expected movement, and be tracked quarterly.
A direct link between Strategy → Execution → Measurable Stewardship.

The Return on Stewardship

“Stewardship is not what you intend. It’s what you can measure, govern, and prove over time.”

When stewardship is governed, it is visible to leadership, measurable to the board, recognized by the market, and fiercely valued by members.



Strategic Process Management (SPM) implements **Dynamic Strategic Governance™ (DSG)** as an institutional operating discipline.

If your board and C-Level Team are serious about governing strategy – not just approving it – it's time to elevate the model!

Request a Strategic Governance Briefing: Info@SPM.Consulting



ProStrategy.ai U.S. Patent Pending

ProStrategy.ai™

The enabling platform for **Dynamic Strategic Governance™**

- ✓ Enterprise-to-department alignment.
- ✓ Governed ideation and sequencing.
- ✓ Metric-guided pacing.
- ✓ Continuous strategic clarity.

SPM defines the discipline. **DSG™** is the model. **ProStrategy.ai™** enables the system.